



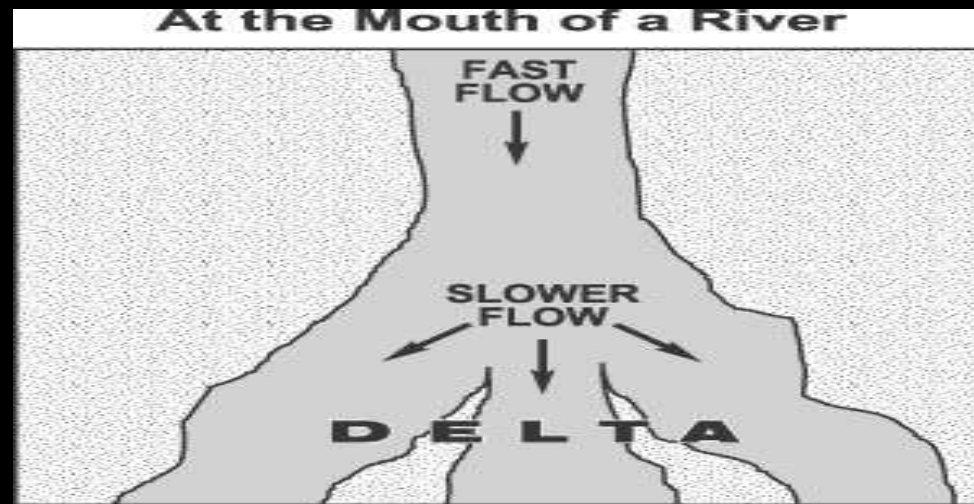
# 5<sup>th</sup> Grade Science Jeopardy

Earth Science	Life Science	Physical Science	Inquiry Skills	Pot Pourri
<u>10</u>	<u>10</u>	<u>10</u>	<u>10</u>	<u>10</u>
<u>20</u>	<u>20</u>	<u>20</u>	<u>20</u>	<u>20</u>
<u>30</u>	<u>30</u>	<u>30</u>	<u>30</u>	<u>30</u>
<u>40</u>	<u>40</u>	<u>40</u>	<u>40</u>	<u>40</u>
<u>50</u>	<u>50</u>	<u>50</u>	<u>50</u>	<u>50</u>

Which solution helps to control floods?

- a. using contour plowing
- b. building bridges over rivers that flood
- c. building control dams and levees
- d. creating deltas at the end of rivers that flood





- When the flow of water slows down at the mouth of a large river, a delta is formed because
  - a. more erosion takes place
  - b. the slower water carves the rock
  - c. sediments are deposited
  - d. the riverbed suffers more weathering



Caves of significant size are known to exist only in 32 of Georgia's 159 counties, and most of those caves are found in \_\_\_\_\_ Georgia.

- a. northwest
- b. northeast
- c. southwest
- d. central



Which is an example of a landform caused by the force of water?

- a. mountain ranges
- b. sandbars
- c. mid-ocean ridges
- d. sand dunes

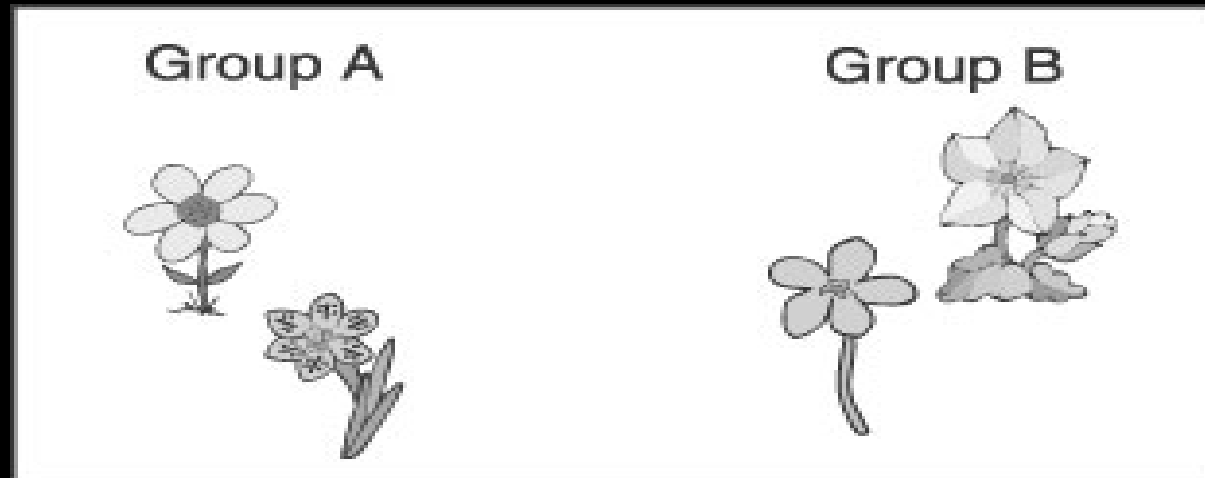


Stone Mountain in Georgia is a granite dome that formed deep underground. Over time, uplift and erosion exposed the granite. What natural activity is MOST responsible for breaking down the mountain today?

- a. faulting
- b. weathering
- c. stream erosion
- d. lightning

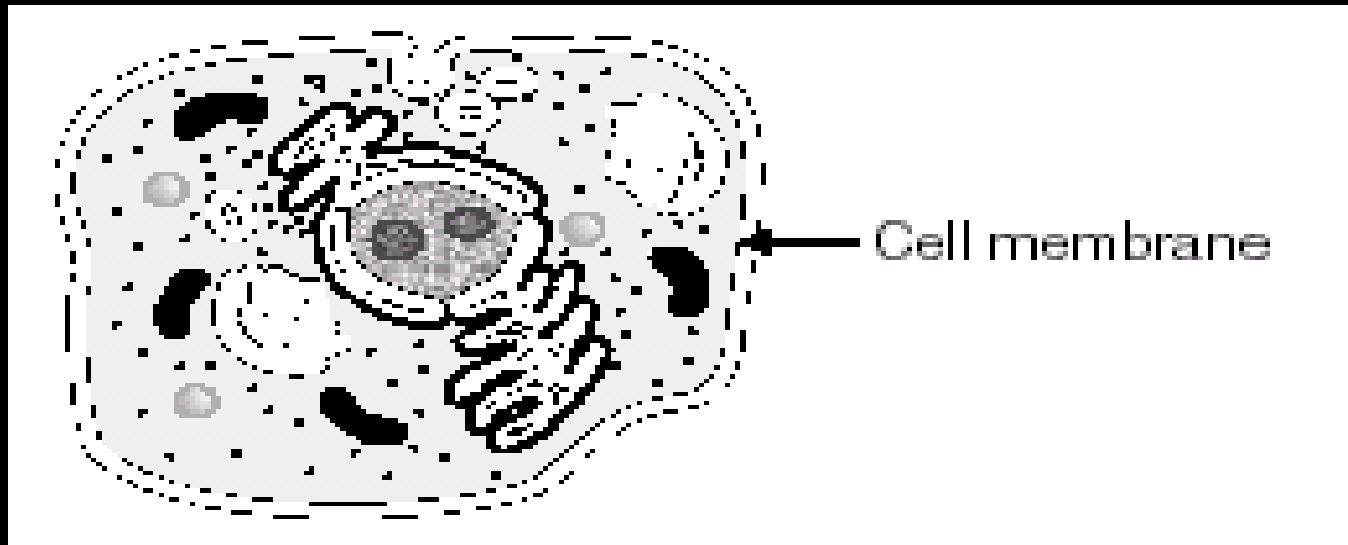


Tom put flowers into two groups. What was Tom looking at to help him decide which group to put each flower in?



- a. odd or even numbers of petals
- b. long petals or short petals
- c. small flowers or long flowers
- d. long stems or short stems





The job of a cell membrane is to

- a. break down food for the cell.
- b. hold the cell together.
- c. help the cell make more cells.
- d. tell the cell how to live.



If two parent cats have several kittens, the kittens will be

- a. exactly like the parents.
- b. a little bit different from the parents.
- c. very different from the parents.
- d. exactly like each other.



Which is a trait people are born with?

- a. ability to play the piano
- b. ability to speak a language
- c. color of the skin
- d. dislike for certain foods

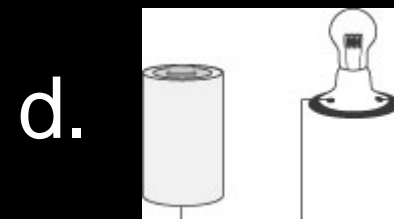
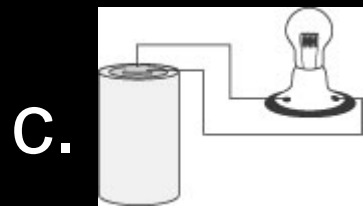
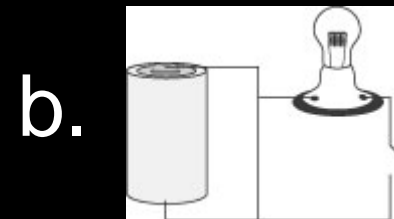
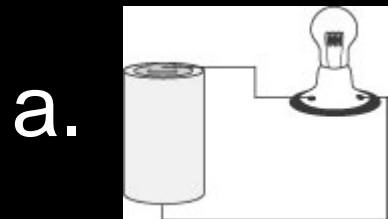


Which are NOT found in both birds and insects?

- a. eggs
- b. feathers
- c. wings
- d. legs



In which circuit will the bulb light up?



An advantage of an electromagnet compared to a permanent magnet is that it is

- a. less complex
- b. smaller
- c. easily turned off
- d. safer



Keenan brought his electricity project to school. He forgot to bring a sample conductor and a sample insulator. Which materials in his classroom could he substitute for the conductor and insulator?

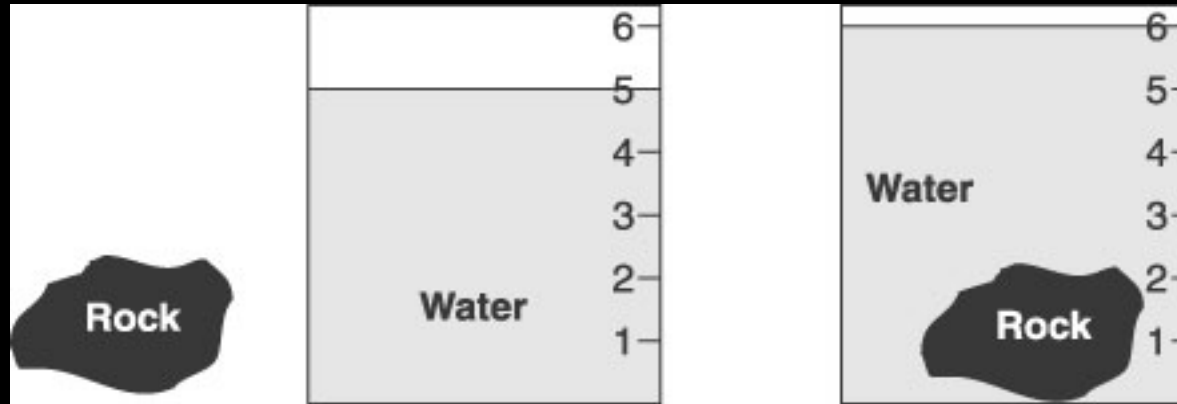
- a. a safety pin and an chalkboard eraser
- b. scissors and a key
- c. a pretzel and a color pencil
- d. a plastic spoon and an index card



If you dissolved a lot of salt in some water in a large flat dish and put the dish in bright sunlight on a hot day, what would be left in the dish after a long time?

- a. dry salt
- b. water with no salt
- c. the same salty water as before
- d. nothing





A rock is put into a pail that has some water in it. Before the rock is put into the pail, the water is at the 5-liter line. After the rock is added, the water rises to the 6-liter line. The space taken up by the rock is

- a. 1 liter
- b. 5 liters
- c. 6 liters
- d. 11 liters



When you write down how much a plant **grew** each day for a week, you are

- a. recording data.
- b. making a conclusion.
- c. making a hypothesis.
- d. planning an experiment.



Which step comes first when conducting an experiment?

- a. Gathering data
- b. Drawing a conclusion
- c. Making observations
- d. Interpreting data



What should you do after handling the animals in an experiment?

Wash your hands

Write down your observations

Wash the animals

Take pictures of your animal



What temperature scale do scientists use?

- a. Fahrenheit
- b. Celsius



What must an object have in order to be attracted to a magnet?

- a. hardness
- b. iron
- c. copper
- d. gold



Which is true of all cells?

- a. shaped like circles
- b. need energy
- c. have cell walls
- d. can move



If you want to find out how much a boy grew in one year, which of the following **MUST** you know about the boy?

- a. his age.
- b. the type of food he eats.
- c. his height at the start of the year.
- d. the heights of his mother and father.



Why do scientists use microscopes to study plant cells?

- a. to make plant cells grow and divide
- b. to see green cells instead of white cells
- c. to separate plant cells from other cells
- d. to see cells they cannot see with just their eyes



In which state would an earthquake MOST LIKELY occur?

- a. Kentucky
- b. Georgia
- c. California
- d. Oklahoma



When electricity moves through a metal wire, the wire is

- a. a conductor
- b. an insulator
- c. a generator
- d. a multiplier

